

# Operating Manual



**Large power outdoor active speaker**

# Product Overview

## Dear Customer

**Thank you for choosing Q2 speaker, and thank you very much for your trust in our brand.**

**We recommend that you read this manual carefully before turning on the device so that the perfect functions of this equipment can be fully utilized.**

Acesound Q2 high-power outdoor roadshow speaker is a professional outdoor high-power portable multi-functional speaker, consisting of a single 8" bass and four 2.75" neodymium iron boron mid-treble units.

There are 4 microphone channels, 2 instrument channels, EQ and gain can be adjusted separately, 1 channel with Bluetooth playback function, which can support U disk playback and high, medium and low EQ adjustment, independent internal recording live level gain, adjustment knob, and the speaker has audio input and serial parallel output interfaces, which can be used as a sound reinforcement device.

It adopts ultra-high-definition digital audio processing system, supports OTG digital ultra-high-definition live broadcast, internal recording and provides reverse power supply for mobile phones at the same time.

(OTG parameters: recording 24bit/96K, playback 24bit/48K).

## Basic parameters

**Model:** Q2

**Power:** Maximum power 240 watts

**Frequency response range:** 45Hz-20KHz

**Audio input:** 2 microphone inputs, 4 line inputs (XLR/TRS), 1 AUXIN 3.5mm audio input 1 USB input, 1 Bluetooth input

**Speaker unit:** 8" bass x1, 2.75" mid-treble x4

## Important Safety Information

### CAUTION

Batteries (battery packs or installed batteries) should not be exposed to high temperatures such as sunlight or fire!

Improper battery replacement may cause explosion risk. Replace with the same or equivalent type of battery.

Please dispose of used batteries in accordance with local regulations. Do not incinerate!

Do not place this device in harsh environments such as high temperature, humidity, and dust.

Please use the lithium battery pack that comes with the device.

If you need to replace the lithium battery pack, please operate under the guidance of a professional or contact the Elliptical Planet Service Center and authorized dealers.

Do not open the lithium battery pack box at will, do not hit the battery pack with hard objects, and keep away from harsh environments such as high temperature and humidity.

Please connect the dedicated power socket of the device and the power socket with a ground connection, and correctly connect (this device)-(power adapter)-(power socket).

### KIND TIPS

Improper use of this product may cause damage or destruction of items

Do not step on the device or place heavy objects on it.

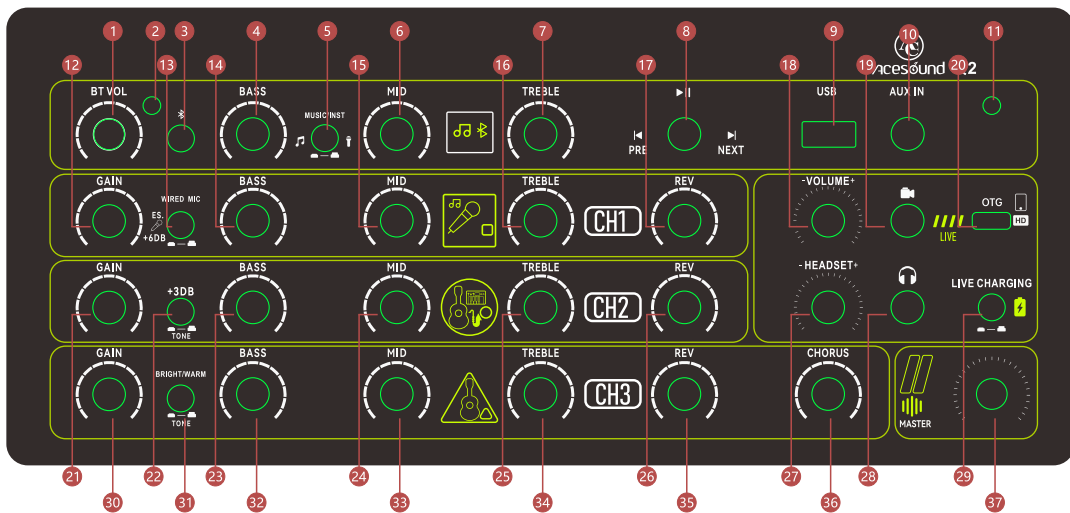
Do not handle the power adapter, power plug, and lithium battery pack with wet hands.

Unplug the power adapter before moving or wiping the device.

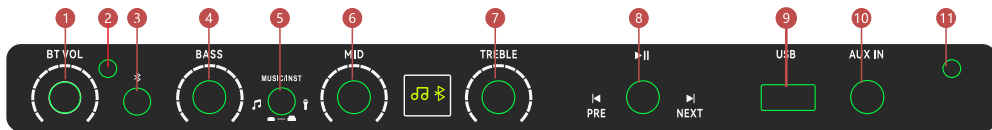
The device should not be exposed to water drips or splashes.

No objects (such as flammable and explosive materials, screws, metal parts, etc.) or any liquids (such as beverages, tea cups, etc.) should be placed on the device.

# Panel display



## Front panel function description

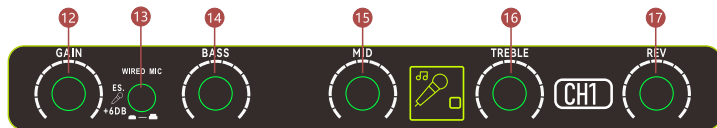


- 1 **Bluetooth volume:** Line output, Bluetooth/U disk volume control knob
- 2 **Bluetooth U disk indicator:** Flashing blue light when not paired, Bluetooth paired Successful blue light, USB flashes red light
- 3 **Bluetooth switch:** Turn on Bluetooth automatically, LED flashes blue light Press for 3 seconds to turn on and off
- 4 **Bass:** Line output/Bluetooth/U disk bass control knob
- 5 **Mode switch:** Music mode/Accompaniment mode
- 6 **Midrange:** Line output/Bluetooth/U disk midrange control knob
- 7 **Treble:** Line output/Bluetooth/U disk treble control knob
- 8 **Switch knob:** Turn left to go to the previous song, turn right to go to the next song, short press to pause, press again to play, long press for five seconds to exit the current Bluetooth
- 9 **U disk interface:** USB/U disk input interface
- 10 **3.5mm linear input:** audio source input interface
- 11 **Indicator:** total system power indicator

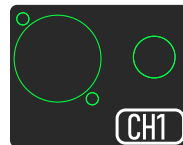
### Bluetooth/U disk/3.5mm linear input usage:

Bluetooth is automatically turned on when powered on, the LED light flashes blue, and Bluetooth is connected. Press the music mode to adjust the bass/mid-range/treble of the music. The music mode is played for accompaniment mode. Press and hold the music switch knob for five seconds to disconnect Bluetooth. Go to the previous song on the left, go to the next song on the right, press once to pause, press again to play, long rotate to the left to reduce the volume, long rotate to the right to increase the volume. Insert a USB flash drive and turn on Bluetooth to play and adjust. The indicator light turns red when the USB flash drive is successfully connected. Connect to the 3.5mm linear input to directly play music for adjustment (Bluetooth/U disk/3.5 linear input adjustment is the same track EQ)

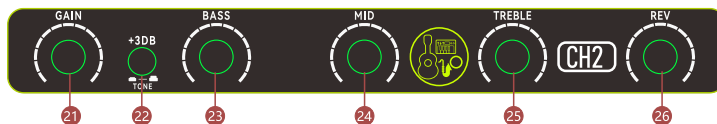
## Front panel function description



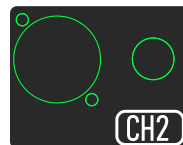
- 12 CH1 volume:** Volume adjustment for channel 1
- 13 ES mode switch:** Wired microphone gain stacking
- 14 Bass:** Bass adjustment knob for microphone channel 1
- 15 Midrange:** Midrange adjustment knob for microphone 1 channel
- 16 Treble:** Treble adjustment knob for microphone 1 channel
- 17 Reverb:** Reverb adjustment knob for microphone 1 channel



**Ch1 microphone usage:** connect the wired/wireless microphone to the XLR interface or 6.35mm interface, adjust the low/middle/treble and reverberation of the microphone to a comfortable position according to your voice, and press the ES mode to make the wired microphone fuller, more comfortable and transparent.

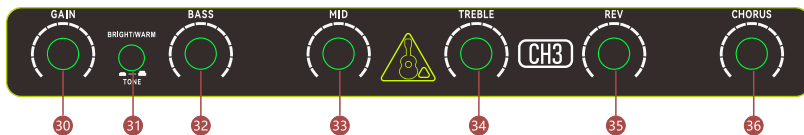


- 21 Ch2 Volume:** (Mic/Instrument) 2-channel volume adjustment knob
- 22 Bass:** (Mic/Instrument) 2-channel bass adjustment knob
- 23 Bright/Warm:** (Mic/Instrument) 2-channel bright/warm selection
- 24 Midrange:** (Mic/Instrument) 2-channel midrange adjustment knob
- 25 Treble:** (Mic/Instrument) 2-channel treble adjustment knob
- 26 Reverb:** (Mic/Instrument) 2-channel reverb adjustment knob



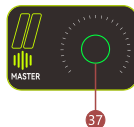
**Ch2 microphone/instrument use:** Connect the wired/wireless microphone/instrument to the XLR interface or 6.35mm interface, adjust the microphone's low/mid/treble and reverberation to a comfortable position according to your own voice, and press the ES mode to make the wired microphone's vocals fuller, more comfortable and transparent, and make the instrument sound softer.

## Front panel function description



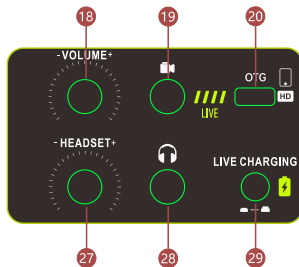
- 30 **CH3 Volume:** Volume adjustment knob for channel 3
- 31 **Bright/Warm:** Bright/Warm selection for channel 3
- 32 **Bass:** Bass adjustment knob for instrument channel 3
- 33 **Midrange:** Midrange adjustment knob for instrument channel 3
- 34 **Treble:** Treble adjustment knob for instrument channel 3
- 35 **Reverb:** Reverb adjustment knob for instrument channel 3
- 36 **Chorus:** Chorus adjustment knob for instrument channel 3

**Ch3 Instrument Use:** Connect the instrument to the 6.35mm interface, adjust the instrument's low/mid/treble/reverb/chorus to the appropriate position according to the player's needs, and press the bright/warm mode to make the instrument sound softer.



- 37 **Total volume:** Control the overall volume of the speaker

## Front panel function description

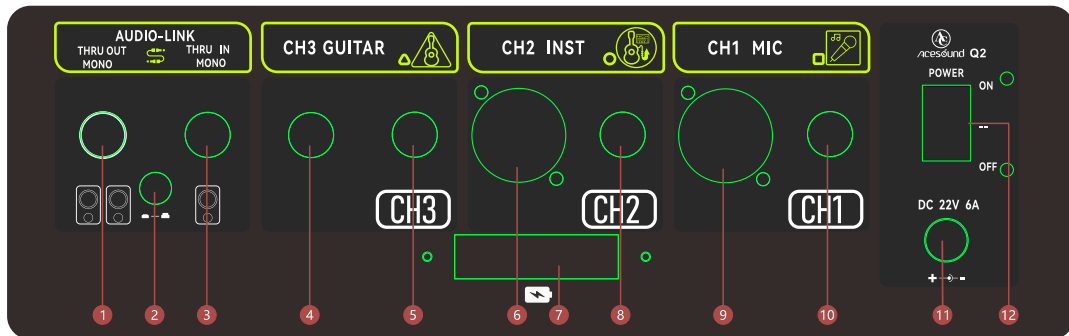


- 18 Live volume:** control 3.5mm live interface and OTG volume knob
- 19 3.5mm live interface:** Android/iOS/3.5mm live audio interface
- 20 Ultra HD OTG:** Ultra HD OTG recording/live interface, recording  
(OTG parameters: recording 24bit/96K, playback 24bit/48K), recharge can be provided
- 27 Headphone volume:** Control the volume of the monitor headphone output
- 28 Headphone interface:** 3.5 headphone input interface
- 29 Charging button:** Press to connect to OTG charging, pop up to stop charging

**Live recording usage:** Use the TPC cable to connect the phone, then connect to the OTG internal recording jack, turn on the live volume, adjust the microphone and Bluetooth accompaniment according to the volume of the accompaniment and the human voice, the accompaniment volume is increased, the live volume is reduced, the microphone volume is reduced and the live volume is increased, adjust according to personal usage, the 3.5mm live debugging method is the same, at the same time, we can also power the phone during the live broadcast, press the charging button to charge the live broadcast, and pop it up to live broadcast without charging and monitor at the same time. The operation of the earphone is to turn the earphone sound to a comfortable position and then adjust other functions.

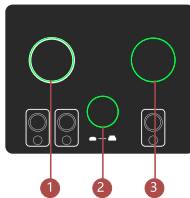


## Rear panel function description



- 1 Series output interface
- 2 Series parallel switch
- 3 Series input interface
- 4 Instrument input 6.35 interface channel 3
- 5 Instrument input 6.35 interface channel 3
- 6 Microphone/instrument XLR interface channel 2
- 7 Battery life display
- 8 Microphone/instrument 6.35 interface channel 2
- 9 Microphone input XLR interface channel 1
- 10 Microphone input 6.35 interface channel 1
- 11 Speaker charging interface
- 12 Power switch

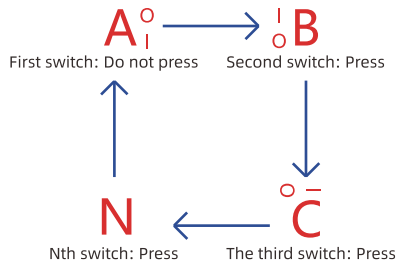
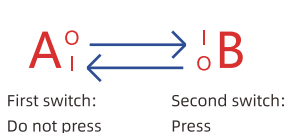
## Rear panel function description



### Use in series:

**Two units in series:** the first unit (not pressed) pops up, the second unit is pressed (if both units are pressed, the two speakers form a loop, which will produce severe howling and cause serious damage to the speakers). If the series line is inserted in the second unit, the sound of the two units can be recorded at the same time. If the series line is inserted in the first unit, only the sound of the first unit can be recorded.

**Multiple units in series:** the first unit (not pressed) pops up, all the others are pressed, and the series line is inserted in the last unit. All the sounds (except the first one) can be recorded at the same time. If the other speakers are popped up (not pressed), the remaining speakers will have no sound.



## Specifications

Model	Q2
Bluetooth distance	<15m
Input power	22V;6A
Max power	240W
Battery capacity	>10000mAh
Frequency response	45Hz~20KHz
Dimensions	305 x 280 x 255 mm
Weight	9Kg
Speaker	8" x 2 ; 2.75" x 4
Cabinet	Medium density fiberboard solid wood
Accessories	Bag x 1, manual x 1 Charger x 1, TPC live cable x 1 Lightning live cable x 1, warranty card x 1



# Troubleshooting

**Q: No power when the machine is turned on, and the power indicator light is off?**

A: Check whether the line is loose or detached during transportation, and whether the battery is low on power.

**Q: No sound when the USB flash drive is plugged in?**

A: 1. Check whether the music is saved to the root directory.

2. The USB flash drive is not compatible, so you need to format the USB flash drive, and then copy the music, or play it on a different USB flash drive.

3. Check whether the music file is in MP3 format, some different music files cannot be parsed by the amplifier decoding board.

**Q: Is the speaker broken?**

A: Check whether the volume is adjusted too high, exceeding the range that the speaker can bear, causing sound distortion, and adjust the volume to a moderate position appropriately.

**Q: Can the adapter of the Q2 speaker be used universally?**

A: This speaker uses a dedicated charger. Do not use chargers other than this brand. All consequences are at your own risk!

**Q: Bluetooth volume is getting smaller?**

A: 1. Check if there is any problem with the version of the music being played.

2. Check if the volume of the mobile phone or the Bluetooth volume of this device is turned on.

3. Check if the Bluetooth connection of this device is ignored, the mobile phone or Bluetooth

**Q: Can the battery pack of the Q2 speaker be universal?**

A: The battery pack of this speaker is a special battery pack, and the battery pack has a built-in protection board for this speaker. If you want to replace the battery, please purchase the original professional battery pack of this speaker.

**Q: Is there noise in the sound of the speaker?**

A: 1. Connection error or other input device problems.

2. Make sure the connection cable is firm, or use another connection cable.

3. When using live broadcast, all devices must not be connected to 220V AC.

4. Do not drop the live broadcast cable with a 3.5mm connector on the ground.

5. Check if there are any interference sources around this device, such as routers and induction cookers.

Please use it away from interference sources.

## Battery maintenance and use

**The battery is the most important part of the Q2 speaker. A well-maintained battery will last longer.**

1. When the battery power is insufficient, you should charge the battery in time, and you should not wait until the power is completely used up before charging. When the battery display shows that the power is less than 5%, you should charge it quickly.
2. If the speaker is not used for a long time, it should be stored in a dry and cool place. Do not store it in a humid environment, which can easily damage the battery.
3. Please try to store the battery in a dry environment with a room temperature above 0°C~40°C. High and low temperature environments will affect the service life of the battery. Please avoid using or storing the battery in an environment below -20°C or above 60°C.
4. Before using a new speaker, you can first charge it fully. Generally, the battery can be better activated in a few hours, and then it can be used. Please charge the battery fully if it is not used for a short time without disassembly. If it is not used for a long time, please charge the battery fully, then disassemble the battery and store it separately in a cool and dry place.



### **Maintenance:**

When cleaning the speaker, do not use water to wipe it. The outer shell of the speaker equipment is mostly made of metal, so water will cause erosion to the outer shell and the conductivity of water is not suitable for use as a cleaning agent. If you want to clean the body, do not use volatile solution-type cleaners, such as foam cleaners, alcohol, etc. Try to choose soft cloth to reduce scratches on the body.

### **Other precautions:**

#### **1. Pay attention to the use environment**

When using the speaker, pay attention to the surrounding ambient temperature and relative humidity, and avoid direct sunlight when using and storing.

#### **2. Pay attention to the operation method**

When using the speaker, pay attention to whether the wiring is correct. When turning on and off or restarting, the speaker volume should be turned down first to avoid damage caused by impact current.

#### **3. Pay attention to the placement of the line**

Remind everyone that there are many lines in a complete set of speaker equipment. When placing them, we must pay attention to placing them in an orderly manner, otherwise it is easy to cause the lines to be entangled, affecting the use effect.



SUBSCRIPTION



WEBSITE

## HONBO AUDIO (CHINA) LIMITED



Subject to Change Without Further Notice  
[www.acemic.com](http://www.acemic.com) Made in China